



MICRON PRECISION SCREWS LTD.

STANDARD INDUSTRIAL FASTENERS

Price List No. MPS/74

EFFECTIVE FROM 15 Dec. 2021



Fasteners Division

| Sector Guide | Tensile Strength Property Class | | Size Range | | | | Equivalent Standards | | | | | |
|-------------------------------------|---------------------------------|-------------------------|------------|---------------|---------------|-----------------|--------------------------------|----------------------|-------------------|--------------------------------|-----------------------|---------------------|
| | | | Diameter | | Length | | | | | | | |
| | N/mm ² Min. | Psi Min. | Metric | Inch* | Metric | Inch* | IS | ISO | DIN | BS | ANSI/ASME | JIS |
| Socket Head Cap Screw | (1220) (12.9) | 1,90,000 | M5 to M24 | 3/16 to 1" | 4mm to 300mm | 3/8" to 10" | 2269 | 4762 | 912 | FOR INCH SERIES BS.2470 | B18.3.1 M/ B18.3 | B1176 |
| Socket Low Head Cap Screw | (1040) (10.9) | ---- | M5 to M12 | ---- | 10mm to 80mm | ---- | ---- | ---- | 6912 7984 | | ---- | ---- |
| Socket Counter Sunk Head Screw | (1040) (10.9) | ---- | M5 to M30 | 1/4" to 1" | 10mm to 250mm | 1/2" to 4" | 6761 | 10642 | 7991 | | B18.3.5M/ B18.3 | ---- |
| Socket Button Head Cap Screw | (1040) | (10.9) | M5 to M12 | ---- | 10mm to 50mm | ---- | ---- | 7380 | 9427 | | B18.3.4M/ B18.3 | ---- |
| Socket Set Screws Knurled Cap Point | Hardness HRC 45 Min. | | M3 to M12 | 3/16" to 1/2" | 3mm to 55mm | 3/16" to 1.1/2" | 6094 | 4029 | 916 | | B18.3.6M/ B18.3 | B 1177 |
| Socket Set Screws Special Points | Hardness HRC 45 Min. | | M3 to M16 | 3/16" to 1/2" | 3mm to 55mm | 3/16" to 1.1/2" | ... | 4026 4027 4028 | 915 916 914 | | B18.3 | |
| Hex Head Bolts/Screws | 800/830 (8.8) 1,040 (10.9) | Grade R, S, V | M5 to M42 | 1/4" to 1" | 8mm to 400mm | 3/8" to 1.1/2" | 1364 | 4014 4017 | 931 933 | BSF/BSW BS:1083 | B18.21 | B 1180 |
| Hex Nuts | 1040 (Proof Stress) (10) | Grade 8 Grade R Grade 5 | M4 to M42 | 5/16" to 1" | --- | --- | 1364 | 4032 | 934 | | UN/UNF BS:1768 | B18.2.4.1M/ B18.2.2 |
| Special Products | 800/830 (8.8) 1,040 (10.9) | | M5 to M42 | 1/4" to 1" | 6mm to 400mm | 3/8" to 12" | As per customer specifications | | | | | |



* Thread Type in any of the following inch series BSW, BSF, BA, UNC & UNF
 * All Standards are for latest version.

| METRIC PRODUCTS | | | | | | | UNIFIED INCH PRODUCTS | | | | B.S.INCH PRODUCTS | | | | | |
|-----------------|-----------------------|--------|-------------|--------|------------|-------|-----------------------|--------|------|------------|---------------------------|--------|------|-----------|--------|-----------|
| SIZE | THREAD PITCH & T.P.I. | | | | Major Dia. | | SIZE | T.P.I. | | Major Dia. | SIZE | T.P.I. | | Major Dia | T.P.I. | Major Dia |
| | COARSE | | FINE | | | | | UNC | UNF | | | BSW | BSF | | | |
| | PITCH mm | T.P.I. | PITCH mm | T.P.I. | mm | inch | | | inch | | | | inch | BA | inch | |
| M3 | 0.50 | 51.00 | | | 3.00 | 0.118 | # 5 | 40 | 44 | 0.125 | 1/8 | 40 | | 0.125 | | |
| | | | | | | | # 6 | 32 | 40 | 0.138 | 5BA 4BA | | | 43.1 | 0.126 | |
| M4 | 0.70 | 36.00 | | | 4.00 | 0.157 | # 8 | 32 | 36 | 0.164 | 3BA | | | 34.8 | 0.161 | |
| M5 | 0.80 | 32.00 | | | 5.00 | 0.197 | # 10 | 24 | 32 | 0.190 | 3/16" | 24 | 32 | 0.187 | | |
| | | | | | | | | | | | 2BA 1BA | | | 31.3 | 0.185 | |
| M6 | 1.00 | 25.00 | | | 6.00 | 0.236 | 1/4" | 20 | 28 | 0.250 | 0BA 1/4" | 20 | 26 | 0.250 | 25.4 | 0.236 |
| M8 | 1.25 | 20.00 | 1.00 | 25 | 8.00 | 0.315 | 5/16" | 18 | 24 | 0.313 | 5/16" | 18 | 22 | 0.313 | | |
| M10 | 1.50 | 17.00 | 1.25 | 20 | 10.00 | 0.394 | | | | | | | | | | |
| | | | 1.00 | 25 | 10.00 | 0.394 | 3/8" | 16 | 24 | 0.375 | 3/8" | 16 | 20 | 0.375 | | |
| | | | | | | | 7/16" | 14 | 20 | 0.438 | | | | | | |
| M12 | 1.75 | 14.50 | 1.50 | 17 | 12.00 | 0.472 | | | | | | | | | | |
| | | | 1.25 | 20 | 12.00 | 0.472 | 1/2" | 13 | 20 | 0.500 | 1/2" | 12 | 16 | 0.500 | | |
| (M14) | 2.00 | 12.50 | 1.50 | 17 | 14.00 | 0.551 | | | | | | | | | | |
| M16 | 2.00 | 12.50 | 1.50 | 17 | 16.00 | 0.630 | 5/8" | 11 | 18 | 0.625 | 5/8" | 11 | 14 | 0.625 | | |
| (M18) | 2.50 | 10.00 | 1.50 | 17 | 18.00 | 0.709 | | | | | | | | | | |
| M20 | 2.50 | 10.00 | 1.50 | 17 | 20.00 | 0.787 | 3/4" | 10 | 16 | 0.750 | 3/4" | 10 | 12 | 0.750 | | |
| M22 | 2.50 | 10.00 | 1.50 | 17 | 22.00 | 0.866 | 7/8" | 9 | 14 | 0.875 | 7/8" | 9 | 11 | 0.875 | | |
| M24 | 3.00 | 8.50 | 2.00 | 13 | 24.00 | 0.945 | 1" | 8 | 12 | 1.000 | 1" | 8 | 10 | 1.000 | | |
| | | | | | 24.00 | 0.945 | | | | | | | | | | |
| M27 | 3.00 | 8.50 | | | 27.00 | 1.060 | 1.1/8" | 7 | 12 | 1.125 | 1.1/8" | 7 | 9 | 1.125 | | |
| M30 | 3.50 | 7.30 | | | 30.00 | 1.181 | 1.1/4" | 7 | 12 | 1.250 | 1.1/4" | 7 | 9 | 1.250 | | |
| M33 | 3.50 | 7.30 | | | 33.00 | 1.299 | | | | | | | | | | |
| M36 | 4.00 | 6.30 | | | 36.00 | 1.417 | 1.1/2" | 6 | 12 | 1.500 | 1.1/2" | 6 | 8 | 1.500 | | |
| M42 | 4.50 | 5.60 | | | 42.00 | 1.653 | | | | | | | | | | |

SHCS of size above 1" are either as per ANSI B18.3 OR as per MPS - STANDARD

Note:

Surface Finish: All the MPS products, unless otherwise ordered specifically, are supplied in black thermal finish with a coat of rust preventive oil.

Packing: All the 'MPS' products are supplied in standard packing which is mentioned in Price Table.

Plating: MPS recommends that no plating should be carried out on Socket Head products & do not stand any guarantee, as plating adds embrittlement to the strength level of product & configuration which may lead to failures in use.

The prices, specifications and other particulars contained in this Price List are subject to change without notice.



**RECOMMENDED CONSUMER NET PRICES IN RUPEES PER 100 PIECES
EXCLUSIVE OF GST**

**METRIC
SERIES**

EFFECTIVE FROM 15 Dec. 2021

| DIAMETER / LENGTH mm | M5 | M6 | M8 | M10 | M12 | M14 | M16 | M20 | M24 |
|----------------------|------|------|------|------|------|-------|-------|-------|-------|
| 4 | | | | | | | | | |
| 5 | | | | | | | | | |
| 6 | | | | | | | | | |
| 8 | 239 | 338 | | | | | | | |
| 10 | 190 | 338 | 551 | | | | | | |
| 12 | 192 | 284 | 588 | 985 | | | | | |
| 14 | | | 531 | | | | | | |
| 16 | 202 | 279 | 546 | 985 | 1772 | | | | |
| 18 | 364 | 317 | 627 | 986 | 1772 | | | | |
| 20 | 237 | 300 | 572 | 946 | 1484 | | | | |
| 22 | 392 | 376 | 656 | 1111 | 1743 | | | | |
| 25 | 256 | 348 | 612 | 1010 | 1540 | 4506 | 4426 | | |
| 30 | 301 | 378 | 679 | 1179 | 1617 | 4150 | 3553 | | |
| 35 | 352 | 432 | 725 | 1263 | 1705 | 3352 | 3740 | | |
| 40 | 386 | 481 | 823 | 1337 | 1839 | 3436 | 4010 | 8338 | 14740 |
| 45 | 441 | 513 | 877 | 1474 | 2024 | 3462 | 4241 | 8525 | 14784 |
| 50 | 484 | 567 | 958 | 1595 | 2191 | 3627 | 4444 | 8767 | 16727 |
| 55 | 586 | 646 | 1115 | 1664 | 2442 | 3893 | 4884 | 8910 | 17771 |
| 60 | 767 | 754 | 1150 | 1815 | 2541 | 4156 | 4884 | 9114 | 18344 |
| 65 | 1104 | 827 | 1265 | 1951 | 2726 | 4439 | 5280 | 9533 | 18504 |
| 70 | 1327 | 840 | 1423 | 2096 | 2893 | 4724 | 5572 | 9939 | 18640 |
| 75 | 1575 | 1016 | 1625 | 2161 | 3058 | 4950 | 5786 | 11072 | 19745 |
| 80 | 1669 | 1179 | 1931 | 2268 | 3223 | 5291 | 6248 | 11182 | 20906 |
| 85 | | | 2098 | 2397 | 3666 | 5599 | 6688 | | 21840 |
| 90 | 2235 | 1402 | 2108 | 2449 | 3804 | 5951 | 7018 | 11825 | 21835 |
| 95 | | | 2226 | 2763 | 4187 | 6236 | 7524 | | 22575 |
| 100 | 3084 | 1799 | 2228 | 2763 | 4187 | 6236 | 7526 | 13008 | 21194 |
| 105 | | | | | | 6991 | | | |
| 110 | | | | | | 6991 | 8118 | 13992 | 25405 |
| 120 | | | | | | 10863 | 8806 | 16858 | 26423 |
| 130 | | | | | | 12345 | 9697 | 18013 | 28854 |
| 140 | | | | | | 12656 | 10173 | 19206 | 31107 |
| 150 | | | | | | 13832 | 11561 | 20416 | 33071 |
| 160 | | | | | | | | 23254 | 40005 |
| 170 | | | | | | | | 25410 | 42305 |
| 180 | | | | | | | | 30250 | 45150 |
| 200 | | | | | | | | 36622 | 54747 |



- (1) Material : High Grade Alloy Steel
- (2) Threads : IS-4218
- (3) Specifications : IS-2269 DIN 912 ISO-4762
- (4) Mechanical properties : IS-1367 Property Class 12.9
- (5) Shaded size are fully threaded



RECOMMENDED CONSUMER NET PRICE IN RUPEES PER 100 PIECES
EXCLUSIVE OF GST
EFFECTIVE FROM 15 Dec. 2021

**INCH
SERIES**

| DIAMETER / LENGTH mm | 3/16" | 1/4" | 5/16" | 3/8" | 1/2" | 5/8" | 3/4" | 1" |
|----------------------|-------|------|-------|------|------|-------|-------|-------|
| 1/4" | | | | | | | | |
| 3/8" | 315 | | | | | | | |
| 1/2" | 326 | 315 | 520 | 842 | | | | |
| 5/8" | 336 | | 520 | | | | | |
| 3/4" | 314 | 336 | 536 | 737 | 1890 | | | |
| 1" | 341 | 410 | 597 | 836 | 1817 | 3929 | | |
| 1.1/4" | 436 | 462 | 641 | 968 | 2042 | 3687 | | |
| 1.1/2" | 500 | 530 | 752 | 1106 | 2263 | 3878 | 7424 | |
| 1.3/4" | 635 | | | | | | | |
| 2" | 664 | 677 | 896 | 1359 | 2714 | 4635 | 8222 | |
| 2.1/4" | | | 1035 | | | | | |
| 2.1/2" | | 940 | 1262 | 1623 | 3287 | 5011 | 8915 | |
| 2.3/4" | | | | | | | | |
| 3" | | 1313 | 1648 | 1925 | 3733 | 5789 | 9675 | 25703 |
| 3.1/4" | | | | | | | | |
| 3.1/2" | | 1911 | 2081 | 2508 | 4421 | 6571 | 10442 | 30159 |
| 4" | | 2639 | 2602 | 2827 | 4704 | 7589 | 11519 | 31100 |
| 4.1/2" | | | 4161 | 4263 | 5665 | 9152 | 13440 | 36495 |
| 5" | | | 5243 | 5198 | 6143 | 10017 | 14963 | 36508 |
| 5.1/2" | | | 6046 | 5874 | 6941 | 11679 | 17063 | |
| 6" | | | 6989 | | 7833 | 12317 | 20685 | 42759 |
| 6.1/2" | | | | | | | | |
| 7" | | | | | | | | |
| 7.1/2" | | | | | | | | |
| 8 | | | | | | | | 56085 |



- (1) Material : High Grade Alloy Steel RC-38-44
- (2) Threads : BS-84 (BSW)
- (3) Specifications : BS-2470
- (4) Mechanical properties : BS-2470
- (5) Shaded size are fully threaded



RECOMMENDED CONSUMER NET PRICE IN RUPEES PER 100 PIECES
EXCLUSIVE OF GST

EFFECTIVE FROM 15 Dec. 2021

METRIC
SERIES

INCH

| DIAMETER / LENGTH mm | M5 | M6 | M8 | M10 | M12 | M16 | M20 | M24 |
|----------------------|-----|------|------|------|-------|-------|-------|-------|
| 3 | | | | | | | | |
| 4 | | | | | | | | |
| 5 | | | | | | | | |
| 6 | | | | | | | | |
| 8 | 189 | 240 | | | | | | |
| 10 | 184 | 230 | 646 | | | | | |
| 12 | 184 | 214 | 399 | | | | | |
| 16 | 194 | 225 | 420 | 702 | | | | |
| 20 | 215 | 247 | 462 | 746 | 1573 | | | |
| 25 | 247 | 281 | 530 | 850 | 1347 | | | |
| 30 | 289 | 352 | 585 | 978 | 1613 | 5638 | | |
| 35 | 310 | 360 | 677 | 1088 | 1732 | 5381 | | |
| 40 | 389 | 495 | 735 | 1245 | 1923 | 5124 | 11786 | |
| 45 | 551 | 765 | 1160 | 1557 | 2223 | 5381 | | |
| 50 | 625 | 816 | 1208 | 1687 | 2251 | 5648 | 14428 | 22596 |
| 55 | | 949 | 1399 | 1839 | 2809 | 5915 | | |
| 60 | | 1178 | 1778 | 2074 | 2829 | 6288 | 15078 | 19569 |
| 65 | | | 1824 | 2237 | 3521 | 6823 | | |
| 70 | | | 2181 | 2399 | 3922 | 7253 | 15735 | 21559 |
| 75 | | | 2537 | | 4214 | 7579 | 16385 | |
| 80 | | | | | 4558 | 8147 | 17233 | 24426 |
| 90 | | | | | 5274 | 9810 | 19026 | 25942 |
| 100 | | | | | 6106 | 10484 | 20815 | 27936 |
| 110 | | | | | 7598 | 11829 | 22604 | 29930 |
| 120 | | | | | 8508 | 12982 | 24393 | 31949 |
| 130 | | | | | 9419 | 13835 | 26182 | 33943 |
| 140 | | | | | 10329 | 15288 | 27971 | 35937 |
| 150 | | | | | 11239 | 16141 | 29760 | 38931 |
| 160 | | | | | | | 31727 | 41124 |
| 170 | | | | | | | 33890 | 45536 |
| 180 | | | | | | | 36269 | 48189 |
| 190 | | | | | | | 38885 | 51107 |
| 200 | | | | | | | 41762 | 53313 |

| DIAMETER / LENGTH mm | 1/4" | 5/16" | 3/8" | 1/2" | 5/8" | 3/4" |
|----------------------|------|-------|------|------|------|-------|
| 3/8" | 377 | | | | | |
| 1/2" | 420 | 500 | | | | |
| 3/4" | 455 | 525 | 820 | 1872 | | |
| 1" | 515 | 600 | 950 | 2325 | 3968 | |
| 1.1/4" | 585 | 705 | 1095 | 2590 | 3968 | |
| 1.1/2" | 820 | 965 | 1490 | 2923 | 4442 | 9820 |
| 2" | 915 | 1500 | 1795 | 3380 | 5020 | 10800 |
| 2.1/4" | | | 2036 | 3705 | 5398 | 11780 |
| 2.1/2" | | | 2422 | 3700 | 6816 | 11780 |
| 3" | | | 3106 | 4230 | 7643 | 14040 |
| 3.1/2" | | | 3790 | 4735 | 8470 | 17640 |
| 4" | | | 4474 | 5174 | 9297 | 20660 |



- (1) Material : High Grade Alloy Steel RC-33-38
- (2) Threads : IS-2418 / BS-84
- (3) Specifications : DIN-7991 / BS-2470
- (4) Mechanical properties : IS-1367 / BS-2470
- (5) Shaded size are fully threaded



RECOMMENDED CONSUMER NET PRICE IN RUPEES PER 100 PIECES

EXCLUSIVE OF GST

EFFECTIVE FROM 15 Dec. 2021

**METRIC
SERIES**

| DIAMETER / LENGTH mm | M 5 | M 6 | M 8 | M 10 | M 12 |
|-------------------------|-----|-----|------|------|------|
| 8 | 275 | 279 | | | |
| 10 | 227 | 254 | 413 | | |
| 12 | 227 | 279 | 410 | | |
| 16 | 240 | 292 | 495 | 858 | 2032 |
| 20 | 247 | 323 | 514 | 905 | 2071 |
| 25 | 299 | 372 | 600 | 980 | 2108 |
| 30 | 356 | 426 | 646 | 1092 | 2336 |
| 35 | 373 | 454 | 681 | 1205 | 2603 |
| 40 | 415 | 517 | 802 | 1381 | 2851 |
| 45 | 556 | 589 | 1129 | 1518 | 3099 |
| 50 | 576 | 640 | 1191 | 1860 | |
| 60 | | 764 | 1592 | | |



- (1) Material : High Grade Alloy Steel RC-33-38
- (2) Threads : IS-4216
- (3) Specifications : ISO- 7380
- (4) Mechanical properties : IS-1367
- (5) All size are fully threaded



RECOMMENDED CONSUMER NET PRICE IN RUPEES PER 100 PIECES
 EXCLUSIVE OF GST
 EFFECTIVE FROM 15 Dec. 2021

HARD-EN-31
 TOL.m6-
 AS (IS 6689)

| LENGTH mm | 3 | 4 | 5 | 6 | 8 | 10 | 12 | 16 | 20 |
|-----------|------|------|------|------|------|------|------|-------|-------|
| 8 | 404 | 447 | | | | | | | |
| 10 | 422 | 474 | 513 | 536 | | | | | |
| 12 | 438 | 490 | 536 | 536 | | | | | |
| 14 | 474 | 508 | 566 | 551 | | | | | |
| 16 | 502 | 532 | 581 | 581 | 744 | 1117 | | | |
| 18 | 536 | 563 | 627 | 636 | 789 | 1117 | | | |
| 20 | 566 | 588 | 673 | 689 | 831 | 1117 | 1760 | | |
| 25 | 618 | 652 | 741 | 759 | 933 | 1301 | 1760 | 3198 | |
| 30 | 673 | 711 | 820 | 842 | 1071 | 1484 | 2004 | 3727 | 5854 |
| 35 | 734 | 780 | 884 | 887 | 1209 | 1683 | 2234 | 4293 | 6686 |
| 40 | 780 | 849 | 933 | 995 | 1362 | 1815 | 2494 | 4896 | 7528 |
| 45 | 826 | 912 | 967 | 1102 | 1515 | 2004 | 2772 | 5465 | 8384 |
| 50 | 887 | 979 | 1025 | 1203 | 1652 | 2188 | 3036 | 6044 | 9333 |
| 55 | 964 | 1016 | 1079 | 1301 | 1798 | 2433 | 3286 | 6631 | 10297 |
| 60 | 1025 | 1071 | 1203 | 1454 | 1974 | 2705 | 3573 | 7283 | 11261 |
| 65 | 1080 | 1132 | 1288 | 1553 | 2142 | 2956 | 3825 | 7857 | 12049 |
| 70 | 1178 | 1206 | 1385 | 1652 | 2347 | 3222 | 4131 | 8394 | 12929 |
| 75 | 1264 | 1301 | 1487 | 1747 | 2525 | 3481 | 4575 | 8941 | 13831 |
| 80 | 1346 | 1400 | 1591 | 1867 | 2693 | 3749 | 4873 | 9455 | 14795 |
| 90 | 1506 | 1588 | 1842 | 2066 | 3020 | 4223 | 5386 | 10600 | 16646 |
| 100 | 1683 | 1784 | 2127 | 2280 | 3351 | 4774 | 5991 | 11686 | 18467 |
| 110 | | | 2417 | 2726 | 3779 | 5447 | 6815 | 13097 | 21175 |
| 120 | | | 2708 | 3106 | 4296 | 6028 | 7589 | 14198 | 23333 |
| 125 | | | 2892 | 3338 | 4566 | 6350 | 7980 | 14719 | 24388 |
| 150 | | | | 4689 | 5991 | 8186 | 9945 | 17473 | 29621 |



(1) Specifications : IS-6689
 (2) Supply Condition : GROUND & HRC 58-62



RECOMMENDED CONSUMER NET PRICE IN RUPEES PER 100 PIECES

EXCLUSIVE OF GST

EFFECTIVE FROM 15 Dec. 2021

**METRIC
SERIES**

GRADE
8.8/10.9

| DIAMETER / LENGTH mm | M5 | M6 | M8 | M10 | M12 | M14 | M16 | M18 | M 18 fine pitch |
|----------------------|-----|-----|------|------|------|-------|-------|-------|-----------------|
| 8 | | 178 | 357 | | | | | | |
| 10 | 212 | 198 | 359 | | | | | | |
| 12 | 234 | 209 | 387 | | | | | | |
| 14 | 273 | 227 | 410 | | | | | | |
| 16 | 265 | 242 | 435 | 796 | 1162 | | | | |
| 18 | 318 | 255 | 449 | | | | | | |
| 20 | 314 | 271 | 487 | 874 | 1274 | | | | |
| 22 | 346 | 285 | 514 | 916 | | | | | |
| 25 | 357 | 321 | 551 | 973 | 1415 | 2100 | | | |
| 30 | | 369 | 632 | 1068 | 1554 | 2298 | 3884 | | |
| 35 | | 416 | 709 | 1204 | 1696 | 2389 | 3708 | 4668 | 5135 |
| 40 | | 463 | 786 | 1319 | 1895 | 2584 | 3532 | 5002 | 5502 |
| 45 | | 491 | 860 | 1380 | 2060 | 2940 | 3786 | 5329 | 5862 |
| 50 | | 537 | 934 | 1495 | 2230 | 3173 | 4120 | 5667 | 6233 |
| 55 | | 580 | 1012 | 1670 | 2440 | 3462 | 4409 | 6044 | 6649 |
| 60 | | 625 | 1087 | 1786 | 2612 | 3707 | 4709 | 6380 | 7018 |
| 65 | | 673 | 1156 | 1902 | 2785 | 3952 | 4996 | 7118 | 7830 |
| 70 | | 718 | 1237 | 2017 | 2957 | 4170 | 5290 | 7538 | 8292 |
| 75 | | 763 | 1314 | 2139 | 3129 | 4401 | 5581 | 7952 | 8747 |
| 80 | | 812 | 1388 | 2254 | 3298 | 4628 | 5881 | 8328 | 9160 |
| 85 | | 855 | 1464 | 2373 | 3474 | 4864 | 6170 | 8749 | 9624 |
| 90 | | 900 | 1539 | 2489 | 3643 | 5101 | 6461 | 9163 | 10080 |
| 95 | | 945 | 1613 | 2605 | | 5336 | 6760 | 9576 | 10533 |
| 100 | | 992 | 1691 | 2720 | 3983 | 5569 | 7049 | 10235 | 11259 |
| 105 | | | 1777 | 2837 | | 5808 | 7347 | 10661 | 11727 |
| 110 | | | 1865 | 2954 | 4328 | 6044 | 7641 | 11083 | 12192 |
| 120 | | | 2178 | 3189 | 4675 | 6280 | 8227 | 11945 | 13139 |
| 125 | | | 2257 | 3304 | | 6516 | 8516 | 12294 | 13524 |
| 130 | | | 2324 | 3391 | 4980 | 6752 | 8762 | 12614 | 13876 |
| 135 | | | | 3480 | | 6988 | 9062 | | |
| 140 | | | 2487 | 3634 | 5327 | 7223 | 9359 | 13480 | 14828 |
| 150 | | | 2657 | 3866 | 5667 | 7695 | 9938 | 14331 | 15765 |
| 160 | | | 2818 | 4100 | 6047 | 8167 | 10521 | 15173 | 16691 |
| 170 | | | 2984 | 5199 | 6443 | 8639 | 10951 | 15902 | 17492 |
| 180 | | | 3151 | 5478 | 6854 | 9111 | 11705 | 16879 | 18567 |
| 200 | | | 3482 | 6040 | 7280 | 10055 | 12870 | 18587 | 20445 |
| 210 | | | | | | 10527 | 13456 | 19439 | 21383 |
| 220 | | | | | | 10999 | 14042 | 20291 | 22320 |
| 230 | | | | | | 11471 | 14628 | 21143 | 23257 |
| 240 | | | | | | 11943 | 15214 | 21995 | 24194 |
| 250 | | | | | | 12415 | 15800 | 22846 | 25131 |
| 260 | | | | | | | 16386 | 23698 | 26068 |
| 280 | | | | | | | 17587 | 25433 | 27977 |
| 300 | | | | | | | 18789 | 27168 | 29885 |
| 320 | | | | | | | | | |
| 340 | | | | | | | | | |
| 360 | | | | | | | | | |
| 380 | | | | | | | | | |
| 400 | | | | | | | | | |



- (1) Threads : IS-4218
- (2) Specifications : IS - 1364, ISO-4014/4017/4032
- (3) Supply Condition : IS-1367
- (4) Shaded Sizes Are Fully Threaded.



RECOMMENDED CONSUMER NET PRICE IN RUPEES PER 100 PIECES
EXCLUSIVE OF GST
EFFECTIVE FROM 15 Dec. 2021

METRIC SERIES
GRADE 8.8/10.9

| DIAMETER / LENGTH mm | M20 | M 20 fine pitch | M22 | M24 | M27 | M30 | M33 | M36 | M42 |
|----------------------|-------|-----------------|-------|-------|--------|--------|--------|--------|--------|
| 8 | | | | | | | | | |
| 10 | | | | | | | | | |
| 12 | | | | | | | | | |
| 14 | | | | | | | | | |
| 16 | | | | | | | | | |
| 18 | | | | | | | | | |
| 20 | | | | | | | | | |
| 22 | | | | | | | | | |
| 25 | | | | | | | | | |
| 30 | | | | | | | | | |
| 35 | 5992 | 6783 | | 10309 | | | | | |
| 40 | 6422 | 7269 | | 10969 | | | | | |
| 45 | 6847 | 7752 | | 11647 | | | | | |
| 50 | 7280 | 8242 | 9999 | 12326 | | 40634 | | | |
| 55 | 7765 | 8790 | 10664 | 12994 | | | | | |
| 60 | 8251 | 9341 | 11376 | 13663 | 26441 | 36659 | | | |
| 65 | 8738 | 9892 | 11684 | 14458 | | | | | |
| 70 | 9201 | 10416 | 12261 | 15195 | 26441 | 36659 | | | |
| 75 | 9677 | 10955 | 12871 | 15951 | 28421 | 36659 | 49240 | 65374 | |
| 80 | 10151 | 11491 | 13515 | 16680 | 29228 | 36480 | 52062 | 61127 | |
| 85 | 10634 | 12038 | 14132 | | | | | | |
| 90 | 11117 | 12584 | 14757 | 18156 | 31813 | 39597 | 55227 | 62855 | 98289 |
| 95 | 11591 | 13121 | 15365 | | | | | | |
| 100 | 12072 | 13666 | 15740 | 19645 | 34420 | 42613 | 58296 | 63282 | 103940 |
| 105 | 12540 | 14196 | 16323 | | | | | | |
| 110 | 13023 | 14743 | 16940 | 21125 | 37114 | 46874 | 62688 | 67584 | 109613 |
| 120 | 13975 | 15820 | 18126 | 22598 | 38057 | 47910 | 64211 | 68896 | 110464 |
| 125 | 14456 | 16364 | 18812 | | | | | | |
| 130 | 14864 | 16826 | 19370 | 24089 | 39311 | 50067 | 67672 | 72503 | 115127 |
| 135 | | | | | | | | | |
| 140 | 15829 | 17919 | 20582 | 24961 | 41796 | 53172 | 72857 | 77106 | 121533 |
| 150 | 16775 | 18991 | 21766 | 27052 | 44281 | 56759 | 76114 | 80750 | 127929 |
| 160 | 17743 | 20086 | 23006 | 28511 | 49786 | 63538 | 80625 | 88731 | 134323 |
| 170 | 18684 | 21151 | 24302 | 29996 | | | | | |
| 180 | 19646 | 22240 | 25395 | 31478 | 55083 | 69973 | 88285 | 102895 | 146532 |
| 200 | 21568 | 24416 | 27825 | 34458 | 59995 | 76332 | 96039 | 111531 | 153154 |
| 210 | 28648 | 32430 | 39525 | 35941 | 64907 | | | | |
| 220 | 29864 | 33807 | 41177 | 37427 | 86252 | 97664 | 118863 | 141811 | 201065 |
| 230 | 31097 | 35203 | 42863 | 38913 | | | | | |
| 240 | 32323 | 36591 | 44534 | 40399 | 92997 | 104540 | 127637 | 152028 | 215982 |
| 250 | 33545 | 37974 | | 41885 | | | | | |
| 260 | 34699 | 39280 | | 44858 | 99107 | 111425 | 137198 | 162224 | 230964 |
| 280 | 37007 | 41894 | | 47830 | 105188 | 121067 | 146721 | 176463 | 245908 |
| 300 | 39316 | 44507 | | | 110155 | 128074 | 156249 | 211842 | 260824 |
| 320 | | | | | 115122 | 156598 | | 290854 | 319939 |
| 340 | | | | | 120090 | 175390 | | 337389 | 360658 |
| 360 | | | | | | 206709 | | 372292 | 404287 |
| 380 | | | | | | 244293 | | 407196 | 447915 |
| 400 | | | | | | 288140 | | 447915 | 494451 |



- (1) Threads : IS-4218
- (2) Specifications : IS - 1364, ISO-4014/4017/4032
- (3) Supply Condition : IS-1367
- (4) Shaded Sizes Are Fully Threaded.



RECOMMENDED CONSUMER NET PRICE IN RUPEES PER 100 PIECES

EXCLUSIVE OF GST

EFFECTIVE FROM 15 Dec. 2021

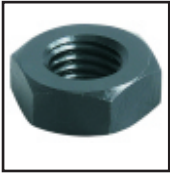
**INCH
SERIES**

BSW/UNC/UNF
GR.5/ GR.8

| DIAMETER / LENGTH / mm | 1/4" | 5/16" | 3/8" | 7/16" | 1/2" | 9/16" | 5/8" | 3/4" | 7/8" | 1" |
|------------------------|------|-------|------|-------|------|-------|-------|-------|-------|-------|
| 1/2" | 319 | | | | | | | | | |
| 3/4" | 520 | 459 | 677 | 991 | 1500 | | | | | |
| 7/8" | 323 | 502 | 735 | 1063 | 1591 | | | | | |
| 1" | 352 | 549 | 745 | 1142 | 1623 | | | | | |
| 1-1/8" | 387 | 592 | 807 | 1223 | 1801 | | | | | |
| 1-1/4" | 423 | 634 | 870 | 1306 | 1917 | | | | | |
| 1-3/8" | 447 | 680 | 934 | 1388 | 2028 | | | | | |
| 1-1/2" | 479 | 719 | 1000 | 1471 | 2061 | 2780 | 3444 | 5617 | 8144 | 9613 |
| 1-5/8" | 513 | 769 | 1064 | 1561 | 2259 | 3059 | 3760 | 5879 | 8474 | 10012 |
| 1-3/4" | 545 | 809 | 1187 | 1640 | 2370 | 3226 | 3944 | 6141 | 8808 | 10383 |
| 1-7/8" | 573 | 855 | 1249 | 1719 | 2485 | 3394 | 4116 | 6404 | 9138 | 10755 |
| 2" | 606 | 896 | 1263 | 1804 | 2502 | 3454 | 4133 | 6667 | 9470 | 11124 |
| 2-1/8" | 641 | 940 | 1377 | 1881 | 2714 | 3730 | 4485 | 6929 | 9842 | 11493 |
| 2-1/4" | 669 | 985 | 1437 | 1965 | 2830 | 3897 | 4652 | 7191 | 10215 | 11866 |
| 2-3/8" | 705 | 1032 | 1500 | 2048 | 2940 | 4065 | 4833 | 7454 | 10587 | 12284 |
| 2-1/2" | 729 | 1074 | 1566 | 2134 | 3055 | 4233 | 5012 | 7717 | 10994 | 12699 |
| 2-5/8" | 762 | 1118 | 1629 | 2223 | 3169 | 4399 | 5187 | 7973 | 11335 | 13118 |
| 2-3/4" | 797 | 1162 | 1687 | 2297 | 3288 | 4566 | 5164 | 8234 | 11706 | 13536 |
| 2-7/8" | 829 | 1203 | 1752 | 2378 | 3397 | 4734 | 5546 | 8497 | 12077 | 13949 |
| 3" | 862 | 1248 | 1813 | 2458 | 3378 | 4902 | 5499 | 8758 | 12452 | 14365 |
| 3-1/8" | 893 | 1293 | 1883 | 2546 | 3626 | 5069 | 5902 | 9023 | 12824 | 14783 |
| 3-1/4" | 927 | 1336 | 1941 | 2632 | 3737 | 5237 | 6083 | 9281 | 13195 | 15203 |
| 3-3/8" | 959 | 1358 | 2004 | 2710 | 3856 | 5405 | 6261 | 9538 | 13567 | 15617 |
| 3-1/2" | 990 | 1426 | 2069 | 2791 | 3968 | 5573 | 6433 | 9805 | 13942 | 16038 |
| 3-5/8" | 1016 | 1470 | 2131 | 2871 | 4082 | 5740 | 6614 | 10064 | 14313 | 16454 |
| 3-3/4" | 1049 | 1510 | 2193 | 2960 | 4200 | 5908 | 6792 | 10325 | 14685 | 16870 |
| 3-7/8" | 1083 | 1554 | 2257 | 3039 | 4315 | 6076 | 6969 | 10590 | 15060 | 17290 |
| 4" | 1113 | 1602 | 2321 | 3119 | 4429 | 6244 | 6871 | 10848 | 15431 | 17704 |
| 4-1/8" | 1146 | 1647 | 2386 | 3206 | 4540 | 6409 | 7324 | 11113 | 15802 | 18120 |
| 4-1/4" | | 1689 | 2444 | 3286 | 4653 | 6577 | 7499 | 11368 | 16176 | 18538 |
| 4-3/8" | | 1733 | 2508 | 3366 | 4767 | 6745 | 7686 | 11638 | 16549 | 18958 |
| 4-1/2" | | 1773 | 2573 | 3451 | 4879 | 6913 | 7862 | 11894 | 16920 | 19372 |
| 4-5/8" | | 1810 | 2637 | 3536 | 5001 | 7080 | 8045 | 12157 | 17294 | 19790 |
| 4-3/4" | | | 2769 | 3712 | 5251 | 7434 | 8447 | 12765 | 18158 | 20780 |
| 5" | | | 2908 | 3898 | 5513 | 7806 | 8869 | 13403 | 19066 | 21818 |
| 5-1/4" | | | 3053 | 4093 | 5789 | | 9313 | 14073 | 20019 | 22909 |
| 5-1/2" | | | 3206 | 4297 | 6078 | | 9779 | 14777 | 21020 | 24055 |
| 5-3/4" | | | 3366 | 4512 | 6382 | | 10268 | 15516 | 22071 | 25258 |
| 6" | | | 3534 | 4738 | 6701 | | 10781 | 16291 | 23175 | 26521 |
| 6-1/4" | | | 3711 | | | | | 17106 | 24334 | 27847 |
| 6-1/2" | | | 3897 | | | | | 17961 | 25550 | 29239 |
| 6-3/4" | | | 4092 | | | | | 18859 | 26828 | 30701 |
| 7" | | | 4296 | | | | | 19802 | 28169 | 32236 |
| 7-1/4" | | | | | | | | 20792 | 29578 | 33848 |
| 7-1/2" | | | | | | | | 21832 | 31057 | 35540 |
| 7-3/4" | | | | | | | | 22924 | 32609 | 37317 |
| 8" | | | | | | | | 24070 | 34240 | 39183 |
| 8-1/2" | | | | | | | | | | 41142 |
| 9" | | | | | | | | | | 43199 |
| 9-1/4" | | | | | | | | | | 45359 |
| 9-1/2" | | | | | | | | | | 47627 |



- (1) Threads : IS-4218
- (2) Specifications : IS - 1364, ISO-4014/4017/4032
- (3) Supply Condition : IS-1367
- (4) Shaded Sizes Are Fully Threaded.



RECOMMENDED CONSUMER NET PRICE IN RUPEES PER 100 PIECES
EXCLUSIVE OF GST
EFFECTIVE FROM 15 Dec. 2021

**METRIC
&
INCH
SERIES**

| METRIC SERIES | GR.8 | GR.10 |
|---------------|-------|-------|
| SIZE | PRICE | PRICE |
| M 5 | 76 | |
| M 6 | 101 | |
| M 8 | 195 | |
| M 10 | 346 | |
| M 12 | 580 | |
| M 14 | 1086 | 1330 |
| M16 | 1369 | 1390 |
| M18 | 2209 | 2229 |
| M 20 | 2880 | 2900 |
| M 22 | 3530 | 3550 |
| M 24 | 4915 | 4935 |
| M 27 | | 7875 |
| M 30 | | 11000 |

| INCH SERIES | |
|-------------|-------|
| SIZE | PRICE |
| 1/4" | 162 |
| 5/16" | 247 |
| 3/8" | 344 |
| 7/16" | 688 |
| 1/2" | 868 |
| 5/8" | 1645 |
| 3/4" | 3017 |



- (1) Threads : IS-4218
 (2) Specifications : IS - 1364, ISO-4014/4017, BS-1083
 (3) Supply Condition : IS-1367

| SAE | B.S. | I.S. I.S.O. DIN | ULTIMATE TENSILE STRENGTH RANGE | | | HARDNESS | | |
|----------------|----------|-----------------------|---------------------------------|---|--------------------------------------|--------------------|------------|------------------------------|
| | | | (Kgf/mm ²) | Newtons/mm ² | Pounds/inch ² (P.S.I.) | BHN | HRB | HRC |
| | | 4.6 | 40.8/81.5 | 400/800 | 58000/116400 | 114 238 | 67 99.5 | |
| GRADE 1 | | | 42.2/81.5 | 414/800 | 59000/116400 | (121) (241) | 70 100 | |
| | | 4.8 | 42.8/81.5 | 420/800 | 59000/116400 | 124 238 | 71 99 | |
| | | 5.6 | 51/81.5 | 500/800 | 72000/116400 | 147 238 | 79 99 | |
| GRADE 2 | | | 51.3/81.5 | 502/800 | 72000/116400 | (150) (241) | 80 100 | |
| | | 5.8 | 53/81.5 | 520/800 | 75000/116400 | 152 238 | 82 99.5 | |
| | P | | 55/81.5 | 579/800 | 75000/116400 | 152 240 | 82 99.5 | |
| | | 6.8 | 61/81.5 | 600/800 | 87000/116400 | 181 238 | 89 99.5 | |
| | R | | 71/98 | 696/965 | 101500/140000 | 201 285 | 93 | 30 |
| | S | | 79/108 | 770/1060 | 112100/154200 | 223 310 | | (20/33) |
| | | 8.8 | 81.6/106 84.6/111 | 800/1040 upto M16 830/1090 above M16 | 116500/150000 120800/158600 | 238/304 242/318 | | 22/32 23/34 |
| GRADE 5 | | | 87/111 | 852/1090 | 124000/158500 | 253 318 | | 25/34 |
| | T | | 86/115 | 840/1127 | 123000/164000 | 247/335 | -- | 24/36 |
| | U | | 93/115 | 916/1127 | 132000/164000 | 271/335 | | 28/36 |
| | V | | 101/128 | 995/1255 | 144000/182000 | 295/370 | | 31/40 |
| GRADE 8 | | | 108/124 | 1060/1220 | 154000/177000 | 312 362 | | (33/39) |
| | | 10.9 | 106/124 | 1040/1220 | 156000/177000 | 304 362 | | (32/39) |
| | W | | 108/132 | 1060/1293 | 154000/190000 | 312 381 | | (33/41) |
| | X | | 118/146 | 1156/1430 | 169000/210000 | 341 410 | | (37/44) |
| | | 12.9 | 124/146 | 1220/1430 | 177000/210000 | 362 410 | | (39/44) |
| | Y | | 124/151 | 1220/1484 | 177000/216000 | 362 432 | | (39/46) |
| | Z | | 148/166 | 1455/1630 | 210000/237100 | 425/475 | | (45/49) |

1Kgf = 9.81 Newtons

1kgf/mm² = 1421.7 Psi

All Quotations, Orders of Contracts are subject to the following conditions of Sale. Any qualification of these conditions made by the Purchaser, will not apply unless expressly accepted in writing by Lakshmi Precision Screws Limited (hereinafter called the Company)

1. This price list is effective from 01.04.2018 and it supersedes all previous price lists for the items covered hereunder.
2. **PRICES:-** The prices to be charged at the time of dispatch shall be determined by deducting the discount from the above LP. The percentage of discount from LP shall be communicated separately from time to time. The prices determined as above shall be F.O.R. Rohtak/Destination basis. Sales tax, Excise duty and other taxes shall be charged extra as applicable at the time of dispatch. Any increase in the duties, levies or taxes levied by the Government shall be to the Purchaser's account. The Company reserves the right to amend the price without prior notice.
3. **LOSS OR DAMAGES:-** The Company's responsibility ceases on handling over goods to the carriers. The Company accepts no responsibility for loss or damages to goods in transit.
4. **PACKING:** - Prices quoted are for packing in cartoons.
5. **PAYMENT:** - Documents shall be negotiated through Bank to be honoured on presentation irrespective of whether the goods reach the destination or not. For the period of delay beyond the due date, panel interest @ 18% per annum or at such rates charged by our Bankers will be payable.
6. **DELIVERY:** - All Ex-stock offers are subject to goods remaining unsold at the time of receipt of the Order. For forward delivery dates are given without any guarantee and no responsibility can be accepted by the Company for delay in delivery or failure to deliver due to circumstances beyond the Company's control. Delivery/despatch may be made in one lot or several lots.
7. **FORCE MAJEURE:** - The Company shall not be responsible for failure or delay in delivery of goods or any part thereof (or any consequential damages) due to acts of God, enemies to the Government of India, wars, revolution, embargo, riots, civil or political disturbances, strikes, lockouts, stoppages of labour, shortage of raw material and/or labour, shortage of motive-power, non-availability of shipping spaces or import or export licences, break-down of machinery, restraints imposed on the Company by the Government, municipality or any other cause beyond the Company's control, such failure/delay shall not entitle the Purchaser's to cancel the contract nor is the Company liable to make good any damage arising from such failure to deliver or delay in delivery.
8. **INFRINGEMENT OF PATENT & TRADE MARK:** - When products are forged to customer's drawings/specifications, the responsibility to ensure that these do not result in infringement of any patent or trade mark will lie entirely with the customer concerned who shall be responsible for consequences if any in case of any such infringement.
9. **CONFIRMATION:** - The Company accepts no responsibility for orders booked by Company sales men or agents till it is confirmed in writing by the Company.
10. **ACCEPTANCE & RETURN:** - Wrong despatches should be notified/reported to the Company within 15 days from the date of receipt of the goods along with copy of packing slip and the Company's consent should be obtained in writing before return of such goods.
11. **ROAD PERMITS:** - Applicable as per Government Rules.
12. **CANCELLATION OF ORDERS:** - The Company reserves the right to refuse the cancellation of the order once it has been accepted. Failure on the part of purchaser to accept the delivery and make payments will be considered a breach of contract and the Company shall be entitled to cancel the contract and forfeit the deposit paid by the purchaser, if any.
13. **GUARANTEE:** - We undertake free replacement of goods against manufacturing defects only. The Company shall not be responsible for any contingent or resulting liabilities or loss arising though any defect in goods supplied.
14. Supplies shall be in natural finish unless otherwise specified. For supply in zinc plating etc. the rate shall be extra.
15. The dealer will not deal in fasteners of sub-standard quality bearing deceptively similar monograms as employed on our products. Such an act will deprive the dealer for dealing in our products.
16. Any disputes or claims arising on or out of, or in connection with quotations, orders or contracts for the supply of goods by the Company shall be referred to the sole Arbitrator appointed by the Managing Director of the Company and the award made by such our Arbitrator shall be final and binding on both the parties.

MICRON PRECISION SCREWS LTD.



HEAD Office: 8th Milestone, Delhi Road, Rohtak 124001, Haryana
Phone :- +91-8395987100
E-mail: info@mpsfasteners.com, sales@mpsfasteners.com

Delhi Office: 208, 2nd Floor, RG City Centre, Opposite Paharganj
Police Station, Desh Bandu Gupta Road
New Delhi- 110055
Telefax:- 011-23535349, 49124881
E-mail: delhi@mpsfasteners.com, delhi1@mpsfasteners.com

Bangalore Office : S.P.A Plaza, No. 24&25, Nagarath Pet,
O.T.C Road, Bangalore-560002,
Phone :- +91-9448352521, +91-80-41140470

